

REVISION HISTORY					
ZONE	REV	E.C.O.	DESCRIPTION	BY/DATE	APPROVED/DATE
	B	037857	REVISED AND REDRAWN	WILLIAM HURLEY 07JUL02	DAVID SPRAGUE 07JUL02
	C	038634	MOVED NOTES LOCATION IMPROVED LEGIBILITY	C.GHIZ 07NOV19	

NOTES:

1. PRINT SHEET #2 ONLY FOR CUSTOMER ARTWORK .
2. TO PRINT SHEET #2, USE BLACK AND WHITE "A" SIZE PDF WITH THE SOLID EDGE DRAWING BACKGROUND TURNED OFF.
3. WHEN REVISING THIS DRAWING, THE SECOND SHEET PART NUMBER REVISION LEVEL MUST BE UPDATED MANUALLY.



CUST: N/A
 UNIT: IM2700 IM 2720
 CONTRACT NO.

COMPUTER CONTROLLED DOCUMENT
 MANUAL CHANGES NOT ALLOWED

NEXT ASSY.	PIII-028		SCALE	N/A	
TOLERANCE	UNLESS OTHERWISE SPECIFIED	± .XX	± .XXX	ANGLE	± 1°
DR.	WILLIAM HURLEY	DATE	07-06-28	ENGR.	DATE
CHKD.		DATE		APVD.	DATE
<small>This drawing and all copies and the design and data shown are the property of HARDIGG INDUSTRIES, INC. So. Deerfield, MA USA and include proprietary information. The borrower by receipt or retention of the drawing agrees that, except as expressly authorized in writing by HARDIGG INDUSTRIES, INC. it will (i) not use the drawing or any copy of the design or data shown (2) not reproduce, copy, excerpt, exhibit or distribute the drawing or any copy for use by others and (3) upon demand return the drawing, all copies and all material copies therefrom.</small>				HARDIGG ® HARDIGG ® INDUSTRIES, INC. South Deerfield, Massachusetts 01373 USA	
TITLE				BEZEL PLATE TEMPLATE, IM2700 IM 2720	
SIZE	D	CAGE CODE	11214	DWG NO.	PIII-0170
PROJ. NO.	PIII		SHEET	1 OF 2	

DWG NO. PIII-0170
 SH. OF 2
 REV. C

DETERMINING BEZEL PLATE SIZE:

- STEP 1 MEASURE THE CASE DIMENSIONS FROM INSIDE CORNER TO INSIDE CORNER FOR ACTUAL TRUE CASE SIZE. REF FIGURE #2.
- STEP 2 SUBTRACT .094" FROM EACH OF THESE DIMENSIONS (LENGTH AND WIDTH) FOR OUTSIDE PLATE SIZE. NOMINAL SIZES SHOWN FOR REFERENCE ONLY.
- STEP 3 THE PLATE SIZE GENERATED IS FOR A BEZEL PLATE THAT WOULD BE LOCATED AT PARTING LINE (REF. FIGURE #1)
FOR A BEZEL PLATE LOCATED BELOW THE PARTING LINE, FOR EVERY .25" BELOW THE PARTING LINE, SUBTRACT .018" FROM THE LENGTH AND WIDTH MEASUREMENT OF STEP 2.
MAX INSTALLATION DEPTH OF PLATE FROM PARTING LINE IS 2.00"

NOTES:

- 1. INFORMATION PROVIDED IS FOR CUSTOMER REFERENCE.
- 2. DIMENSIONS ARE IN INCHES. NOT TO SCALE.
- 3. SEE FRAME INSTALLATION INSTRUCTION "PIII-0140" FOR PROPER LOCATION OF RAILS
- 4. FIGURE #1 CROSS SECTION VIEW OF RAIL, GASKET AND BEZEL PLATE.
- 5. FIGURE #2 MEASUREMENT POINTS FOR DIMENSIONS NEEDED.

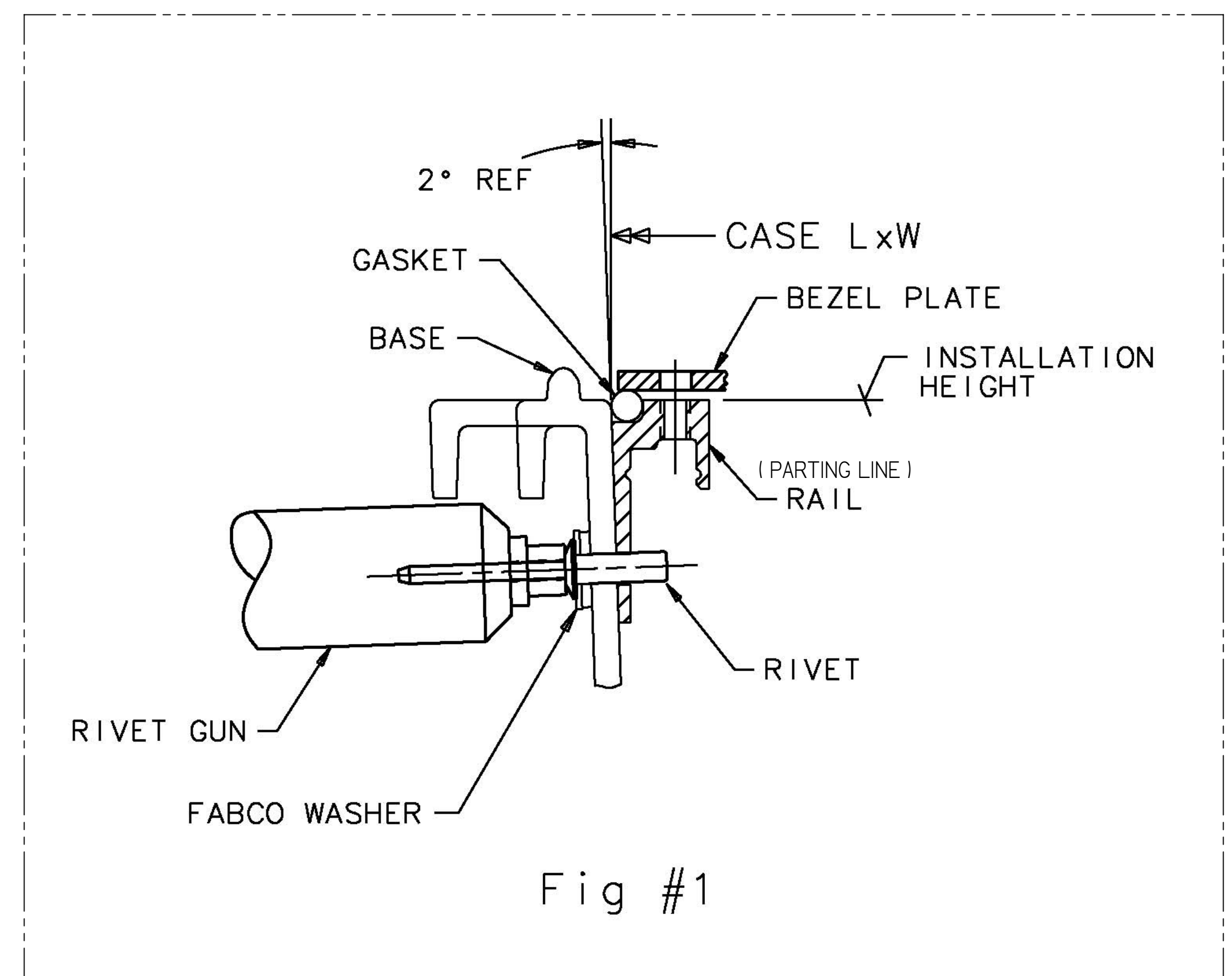


Fig #1

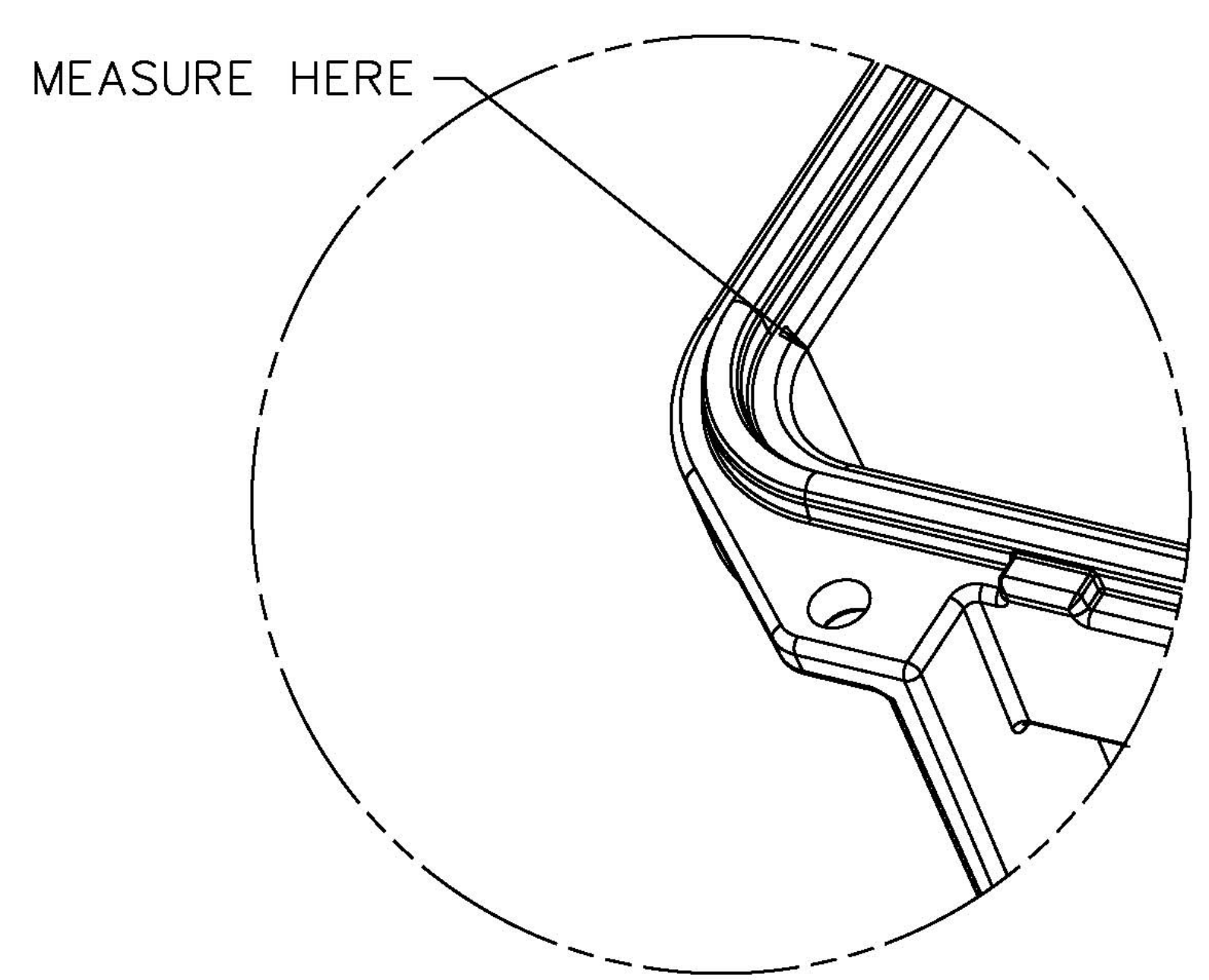
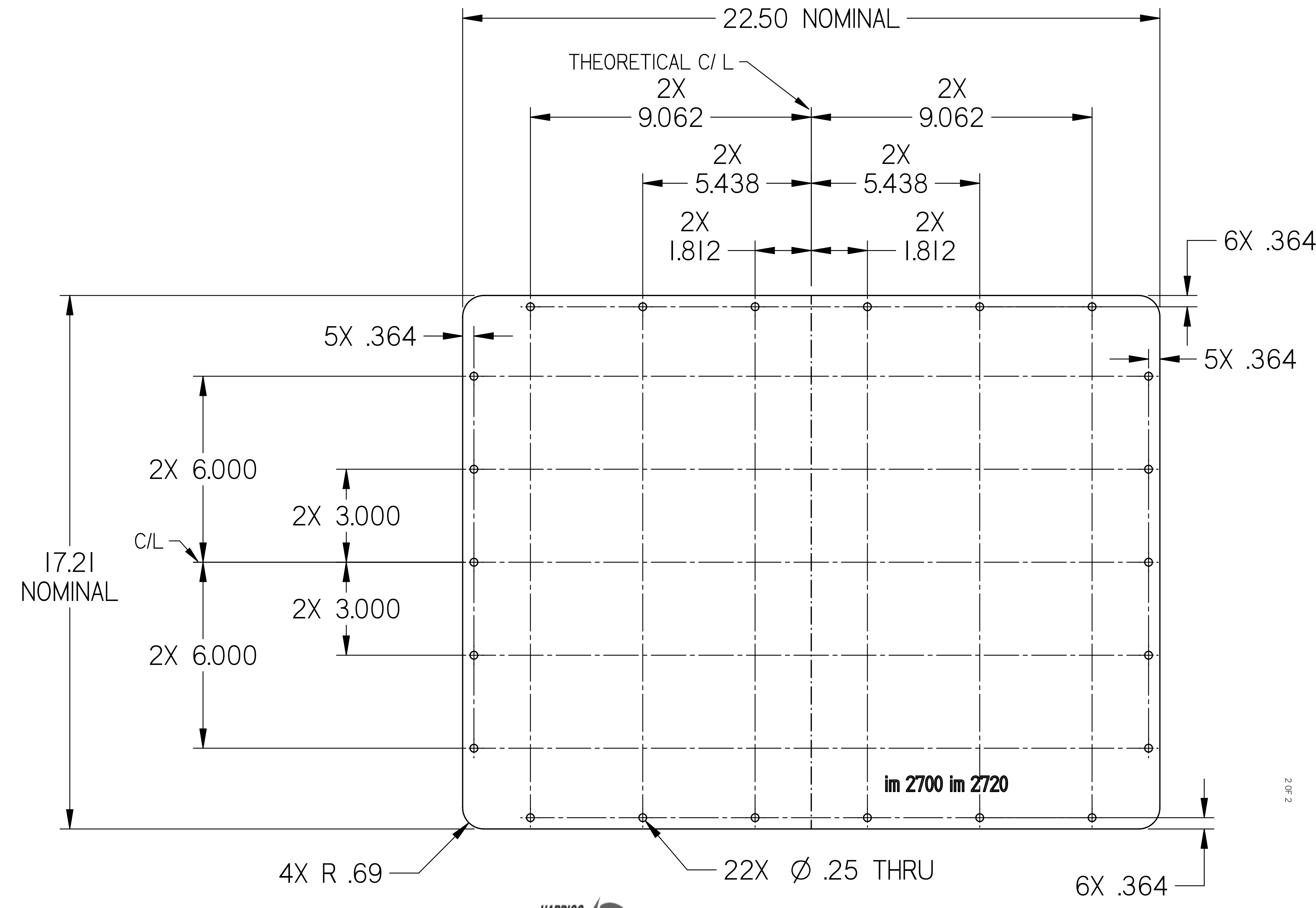


Fig #2



PIII-0170 Rev-C